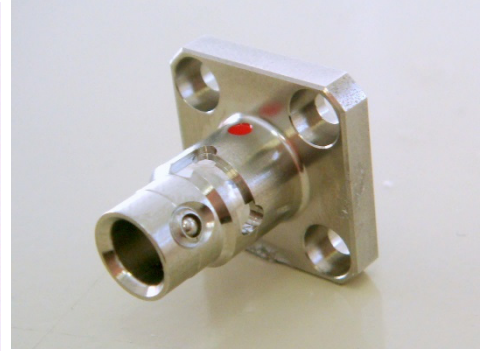


CH Series Connectors & Receptacle

Features

- Push-pull connector
- Detachment error prevention mechanism
- Connector body rotatable
- Waterproof



Specifications

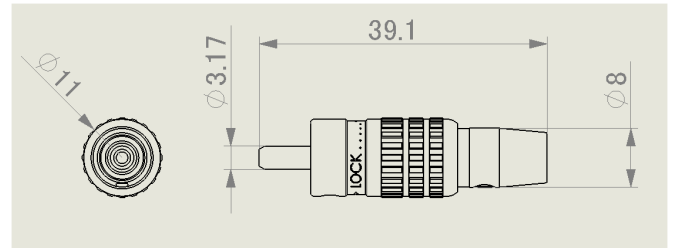
Items	Specified values	Remark
Connection	Push-pull	
Operating temperature range	-40° C ~ 100° C	
Strength of coupling mechanism	> 300 N	
Mechanical operation (repeated)	500 times	
Cable connecting force	> 300 N	Assembled with metal protection tube
Waterproof performance	IP67	
Insertion Loss	< 2 dB	Depends on fiber spec
Corrosion resistance	48h	Salt mist

Connectors

Model number	Fiber sizes Core / Clad : μm	Ferrule Inner diameter : mm	Metal protection tube Inner / Outer / Jacket : mm
CHP-Z600	600 / 660	0.671 +0.008, -0	φ 3.0 / φ 4.6 / φ 5.5
CHP-Z1500	1500 / 1550	1.579 +0.008, -0	φ 3.0 / φ 4.6 / φ 5.5

Figure (mm)

CHP—*



Receptacle

Model number	Specifications	Figure (mm)
CHJ—B4	<ul style="list-style-type: none"> Waterproof Fixed with four screws 	

Accessories

Model number	Specifications	Figure (mm)
DC—P01	Dust cap FSMAP & CHP applicable	
DC—J01	Dust cap FSMAJ & CHJ applicable	

Notice

- When not in use, the ends of the optic fiber and receptacles should be covered with the dust caps to protect the connectors from dirt and contamination.
- Do not bend an optic fiber and a metal protection tube less than minimum bending radius of the optic fiber.